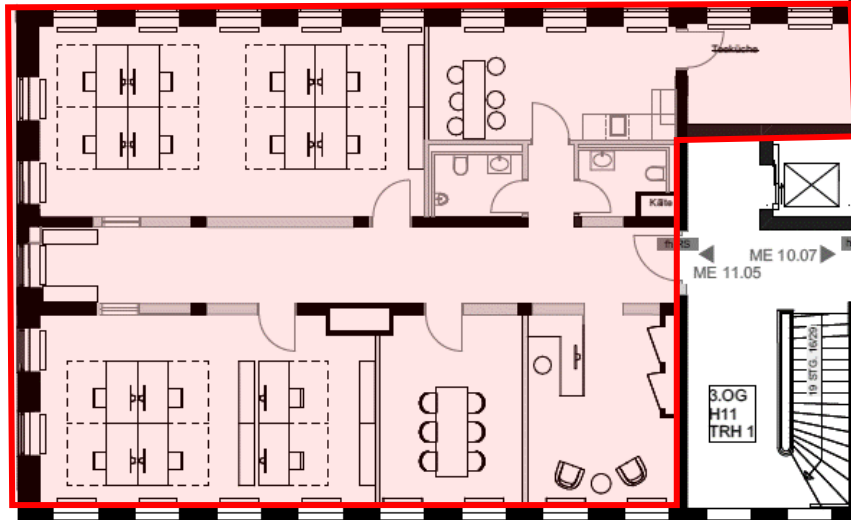


[NA]

[NA]



ME 10.07
ME 11.05

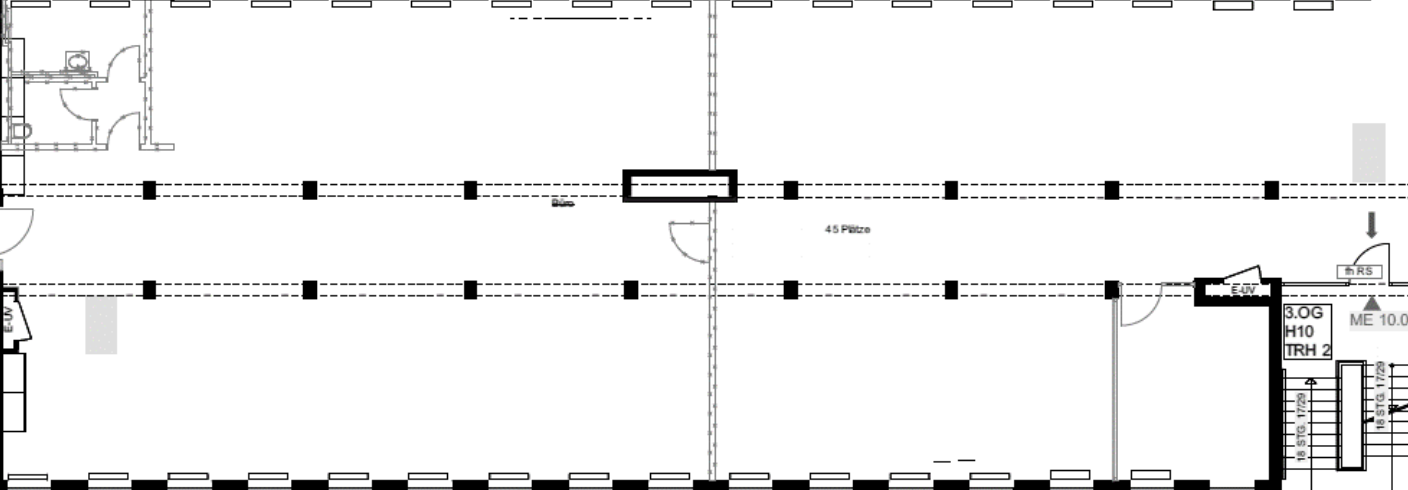
3.OG
H11
TRH 1

18 STG. 1729

18 STG. 1729

ELV

ME 11.05 (3.OG)



45 Plätze

3.OG
H10
TRH 2

18 STG. 1729

18 STG. 1729

ELV

Lüftung
FensterGard

3.OG